

A New Student

A new student joins your class who speaks a different language and struggles to communicate with others.

How will you make them feel included and supported?

A Community Event

Your community is organizing a cultural event to celebrate diversity.

How will you contribute to making it inclusive and engaging for everyone?

The Lunchroom Incident

You witness a group of students excluding another student from sitting with them during lunch.

What action will you take to address the situation and promote inclusion?

Access for All

You come across a public space that lacks accessibility for individuals with disabilities.

How can you advocate for making it more inclusive and accessible?

The Online Bullying

You notice hurtful comments and cyberbullying happening on a social media platform.

How can you intervene and promote respectful online interactions?

An Exclusive Club

Your friends have formed a club but haven't invited certain individuals to join. How will you address the issue and encourage inclusivity?

The Sports Team Tryouts

During team tryouts, you notice biased selection criteria that may exclude certain individuals.

How can you promote fairness and equal opportunities?

A Misunderstood Tradition

You encounter a cultural tradition that is misunderstood and stereotyped by others.

How will you educate and promote understanding?

Supporting Mental Health

A friend is struggling with mental health issues but feels ashamed to seek help.

How can you create a supportive environment and encourage them to seek support?

The Language Barrier

You encounter someone who doesn't speak the same language as you. How will you find a way to communicate and make them feel included?

Equal Pay Advocacy

You learn about a gender pay gap issue in your community. How can you raise awareness and advocate for equal pay for all?

An Inaccessible Building

You visit a public building that lacks ramps or elevators for individuals with mobility challenges. How can you address this issue and advocate for accessibility?

Challenging Gender Stereotypes

You notice instances of gender stereotypes and biases in your surroundings. How can you challenge these stereotypes and promote equality?

Celebrating Abilities

You have the opportunity to organize an event that celebrates the abilities and talents of individuals with disabilities. How will you ensure it is inclusive and empowering?

Breaking Cultural Barriers

You meet someone from a different cultural background who faces prejudice and discrimination. How can you be an ally and help break down cultural barriers?

The Student Council Election

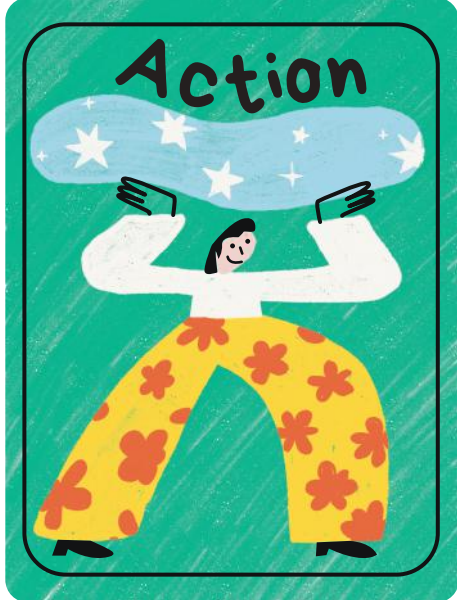
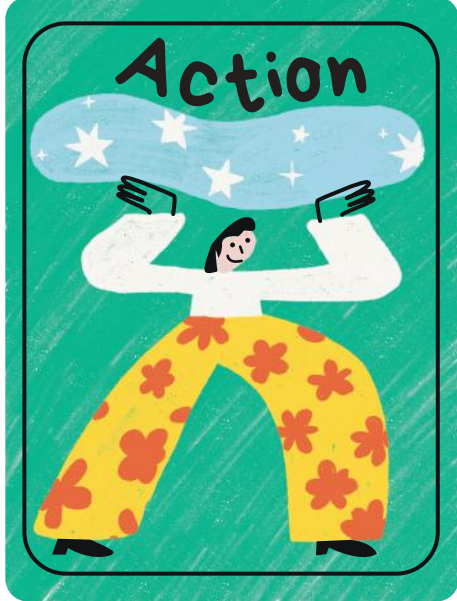
The student council election is coming up, and you notice that candidates from marginalized groups are underrepresented. How can you promote diversity and inclusion in the election process?

Promoting LGBTQ+ Acceptance

You hear derogatory remarks about LGBTQ+ individuals in your school. How can you foster a more accepting and inclusive environment for LGBTQ+ students?

Inclusive Classroom Materials

The textbooks and teaching materials used in your class primarily represent one cultural perspective. How can you advocate for the inclusion of diverse perspectives and cultures in the curriculum?



Speak up!

Advocate for someone who is being treated unfairly and address the situation by voicing your support and standing up against discrimination.

Addressing Microaggressions

You witness a classmate consistently making microaggressions towards another student.

How can you address these harmful behaviors and promote a respectful and inclusive environment?

The Cultural Potluck

Your school is organizing a cultural potluck to celebrate diversity.

How can you ensure that all cultures are represented and appreciated during the event?

Organize a workshop

Plan and organize a workshop to raise awareness about a specific aspect of social inclusion, such as cultural diversity or gender equality.

Volunteer your time

Offer your time and skills to volunteer for a local organization that promotes social inclusion and supports marginalized communities.

Initiate a conversation

Start a conversation with someone you don't know well to learn about their experiences and perspectives, promoting a sense of belonging and connection.

Challenge stereotypes

Identify a stereotype and educate others by sharing accurate information and personal stories that challenge those stereotypes.

Create an inclusive event

Take the lead in organizing an inclusive event or activity that welcomes people of diverse backgrounds and abilities.

Support a friend

Offer support and be a compassionate listener to a friend who is experiencing exclusion or facing challenges related to social inclusion.

Action



Action



Action



Action



Action



Action



Action



Action



Action



Research and Learn

Conduct research on a specific social inclusion topic and share your findings with others to promote understanding and knowledge.

Collaborate with others

Form a team with other players to tackle a social inclusion challenge together, pooling your skills and ideas to find inclusive solutions.

Practice empathy

Put yourself in someone else's shoes and reflect on their experiences to develop a deeper understanding and empathy.

Promote accessibility

Identify a public space or event that lacks accessibility and take steps to advocate for necessary accommodations, such as ramps or sign language interpreters.

Challenge discriminatory language

Call out and address discriminatory language or jokes, promoting respectful and inclusive communication.

Celebrate diversity

Organize a cultural celebration where individuals can share their traditions, customs, and experiences with others.

Create an inclusive policy

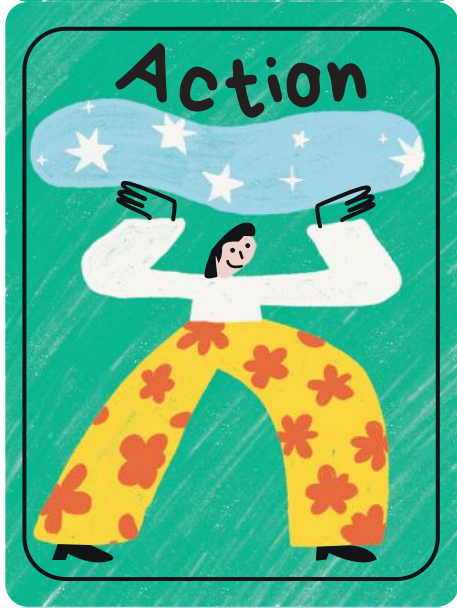
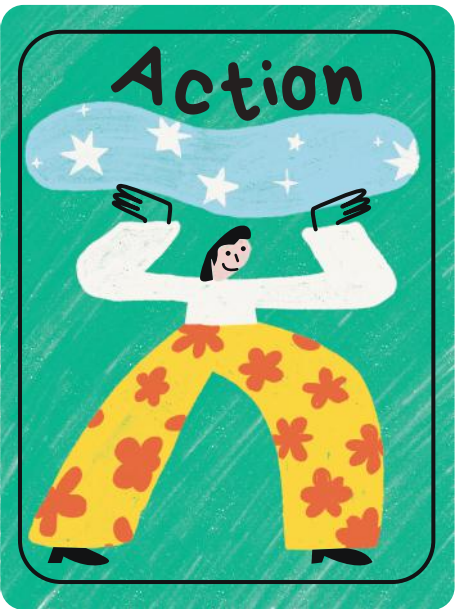
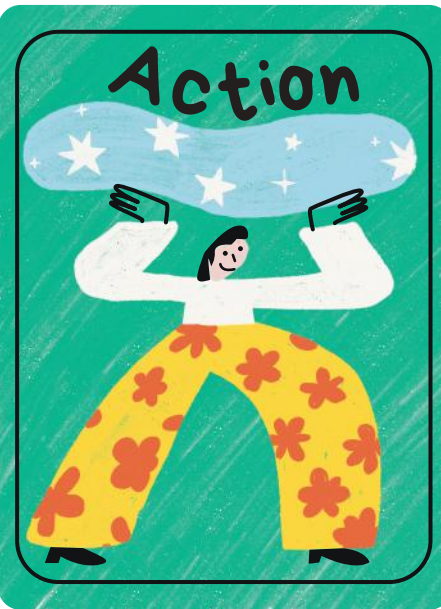
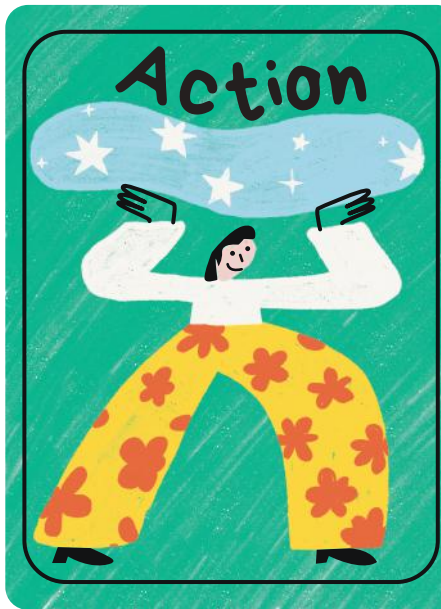
Propose and develop an inclusive policy or guideline within a community, organization, or school to ensure equal opportunities for all.

Encourage active listening

Promote active listening skills among players by engaging in a group discussion where everyone's perspectives are valued and heard.

Start a social media campaign

Utilize social media platforms to launch a campaign that raises awareness about a specific social inclusion issue and encourages positive change.



Join an advocacy group

Get involved in an existing advocacy group or organization that focuses on promoting social inclusion and participate in their activities and initiatives.

Facilitate a dialogue

Act as a facilitator for a discussion on social inclusion, creating a safe space for participants to share their thoughts and experiences.

Support minority-owned businesses

Make a conscious effort to support businesses owned by individuals from marginalized or underrepresented communities.

Language Barrier

Encounter a situation where you need to communicate with someone who speaks a different language.
Find a way to bridge the language barrier and ensure effective communication.

Bullying Incident

Witness an act of bullying or exclusion.
Take appropriate steps to address the situation and support the victim.

Challenge unconscious biases

Reflect on your own biases and work on challenging and overcoming them through self-reflection and education.

Inaccessible Environment

Come across a public space that lacks accessibility for individuals with disabilities.
Identify barriers and propose solutions to make it more inclusive.

Cultural Misunderstanding

Encounter a cultural misunderstanding or stereotype.
Educate others and foster understanding to promote cultural appreciation and inclusivity.

Bias in Hiring

Discover biased hiring practices in a workplace setting.
Advocate for fair and inclusive hiring processes.



Exclusionary Club

Learn about a club or group that excludes individuals based on certain characteristics.

Take action to promote inclusivity and challenge the exclusionary practices.

Social Media Conflict

Encounter a heated discussion or conflict on social media related to social inclusion issues.

Find a constructive way to engage and promote understanding.

Limited Resources

Face a situation where resources are limited, and you need to find a fair and inclusive way to distribute them among a diverse group of people.

Stereotype Reinforcement

Notice instances where stereotypes are being reinforced or perpetuated.

Take steps to challenge and debunk those stereotypes.

Exclusive Policies

Discover policies or rules that discriminate against certain individuals or groups.

Work towards changing those policies to promote inclusivity.

Cultural Appropriation

Encounter a situation where cultural appropriation is taking place.

Educate others about the negative impact and promote respectful cultural exchange.

Lack of Representation

Identify an area where certain groups are underrepresented or marginalized.

Develop strategies to promote equal representation and inclusion.

Micro-aggressions

Witness or experience micro-aggressions, subtle forms of discrimination.

Address the micro aggression and create a safe and inclusive environment.

Social Exclusion

Encounter an individual or group that is socially excluded or isolated.

Find ways to include them and foster a sense of belonging.



Unequal Opportunities

Discover disparities in opportunities and resources between different social groups.
Take action to promote equal opportunities for all.

Gender Stereotyping

Identify instances where individuals are being stereotyped based on their gender.
Challenge those stereotypes and promote gender equality.

Lack of Accessibility Education

Encounter a situation where people lack awareness about accessibility needs.
Educate others about the importance of accessibility and inclusive practices.

Prejudice in the Community

Confront prejudice or discrimination within your community.
Organize activities or initiatives to foster tolerance, understanding, and acceptance.

Inequality in Education

Uncover disparities in educational opportunities and resources among different social groups.
Develop strategies to address and mitigate these inequalities.

Lack of LGBTQ+ Acceptance

Encounter a situation where there is a lack of acceptance and understanding towards LGBTQ+ individuals.
Promote LGBTQ+ rights and foster a more inclusive environment.

Understanding Privilege

Privilege refers to unearned advantages or benefits that individuals receive based on their social identities, such as race, gender, or socio-economic status.

Types of Discrimination

Discrimination can take various forms, including racial discrimination, gender discrimination, age discrimination, disability discrimination, and religious discrimination.

Intersectionality

Intersectionality recognizes that individuals may face multiple forms of discrimination or privilege based on the intersections of their various social identities, such as race, gender, and sexuality.



Knowledge



Knowledge



Knowledge



Knowledge



Knowledge



Knowledge



Knowledge



Knowledge



Knowledge

Inclusive Language

Inclusive language involves using language that respects and includes individuals of all genders, races, abilities, and backgrounds, avoiding discriminatory or exclusionary terms.

Cultural Competence

Cultural competence refers to having knowledge, understanding, and respect for different cultural practices, beliefs, and traditions.

Implicit Bias

Implicit biases are unconscious attitudes or stereotypes that influence our judgments and behaviors, often without our awareness.

Stereotype Threat

Stereotype threat occurs when individuals feel at risk of conforming to negative stereotypes about their social group, which can hinder their performance and well-being.

Inclusion in Education

Inclusive education aims to provide equitable opportunities and support for students with diverse learning needs and abilities.

Ally ship

Ally ship involves actively supporting and advocating for individuals from marginalized or underrepresented communities, using one's privilege to effect positive change.

Micro-aggressions

Micro-aggressions are subtle, often unintentional, verbal or nonverbal behaviors that convey discriminatory messages and demean individuals based on their identities.

Universal Design

Universal design promotes creating products, environments, and experiences that are accessible and usable by individuals of all abilities and backgrounds.

Inclusion in the Workplace

Inclusive workplaces embrace diversity, provide equal opportunities, and foster a supportive environment where all employees can thrive.



Knowledge



Knowledge



Knowledge



Knowledge



Knowledge



Knowledge



Knowledge



Knowledge

Disability Rights

Disability rights advocate for the inclusion, equal opportunities, and accessibility for individuals with disabilities, ensuring their full participation in society.

Understanding Gender Identity

Gender identity refers to a person's deeply felt sense of being male, female, or another gender, which may not necessarily align with the sex assigned at birth.

LGBTQ+ Rights

LGBTQ+ rights advocate for the equal rights, protections, and acceptance of lesbian, gay, bisexual, transgender, and queer individuals.

Understanding Cultural Appropriation

Cultural appropriation involves adopting or borrowing elements of another culture without understanding or respecting its significance, often resulting in harm and perpetuating stereotypes.

Inclusive Parenting

Inclusive parenting involves embracing diversity, challenging gender stereotypes, and fostering an inclusive environment for children to thrive in.

Mental Health Awareness

Mental health awareness promotes understanding, acceptance, and support for individuals facing mental health challenges, reducing stigma and ensuring access to resources.

Social Justice Movements

Social justice movements advocate for fair and equal treatment, addressing social inequalities and systemic injustices.

The Importance of Empathy

Empathy involves understanding and sharing the feelings and experiences of others, promoting compassion and building connections across differences.